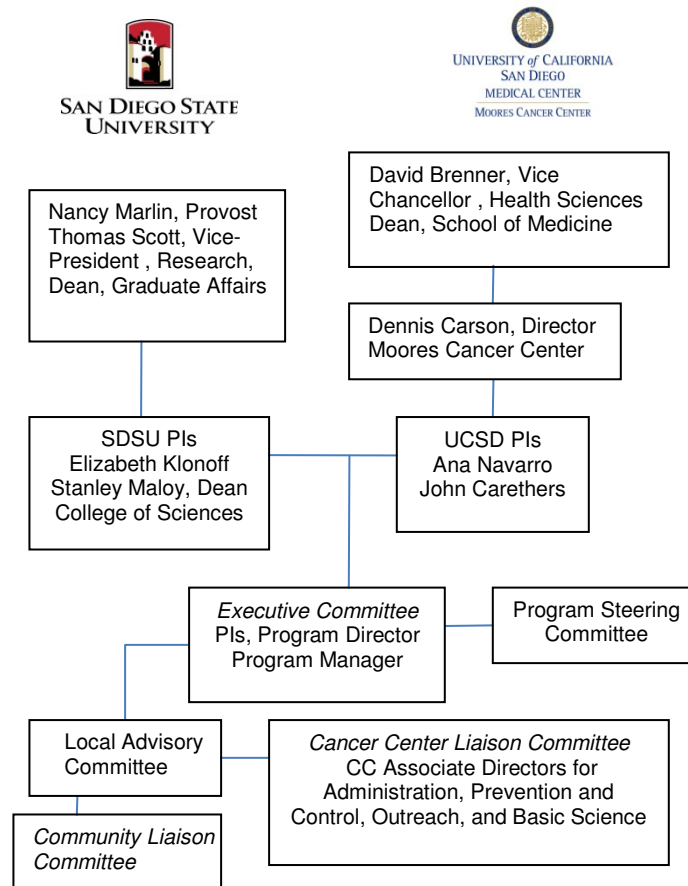


## COMPREHENSIVE PARTNERSHIP ORGANIZATIONAL CHART

The Comprehensive Partnership's infrastructure is comprised of institutional, academic, and community leadership. The different committees function to advise and establish priorities that guide the activities of the Comprehensive Partnership towards achieving its goals.

### Organizational Chart



### Program Steering Committee (PSC)

The **Program Steering Committee (PSC)** is the external scientific advisory board of the Comprehensive Partnership and comprised of national experts in the fields of health and cancer disparities. The PSC makes recommendations for establishing priorities, changing direction, and identifying areas of new opportunities. The PSC provides an overall assessment of the Comprehensive Partnership's accomplishments, progress, and makes recommendations for new/continued funding for individual pilot/full projects/programs based on progress.

- Robert G. Robinson, MSW, Dr.P.H. PSC Chair  
Associate Director for Health Equity, Centers for Disease Control (Retired)
- Nelson Aguila, D.V.M.  
Program Director, Center to Reduce Cancer Health Disparities, National Cancer Institute
- Lourdes Baezconde-Garbanati, Ph.D., M.P.H.

Associate Professor of Preventive Medicine, University of Southern California

- F. Allan Hubbell, M.D., M.S.P.H.  
Professor of Medicine and Senior Associate Dean/Academic Affairs of the School of Medicine, University of California at Irvine
- Juanita L. Merchant, M.D., Ph.D.  
Professor of Internal Medicine and Cellular and Molecular Biology, University of Michigan
- Roberto Villareal, M.D., M.P.H., Dr.P.H.  
Director, South Texas Health Research Center, University of Texas Health Science Center, San Antonio, Texas

### **Local Advisory Committee (LAC)**

The **Local Advisory Committee (LAC)** is the internal scientific advisory board of the Comprehensive Partnership and comprised of SDSU and UCSD faculty and community representatives and advocates. The LAC makes recommendations for new/continued funding for individual pilot/full projects/programs based on progress and evaluates other Comprehensive Partnership activities.

- Lawrence Alfred, Ph.D.  
Professor Emeritus of Biological Sciences, SDSU and Co-Director of the Continuing Umbrella of Research Experience (CURE) Program, UCSD Moore's CC
- Lynda Barbour, M.P.H.  
Regional Health Promotion Director, American Cancer Society
- Kim Barrett, Ph.D.  
Dean of Graduate Studies and Professor of Medicine, UCSD
- Tracy Downs, M.D.  
Assistant Professor of Surgery and Urology, UCSD
- John Elder, Ph.D., M.P.H.  
Distinguished Professor and Head of the Division of Health Promotion and Behavioral Sciences, Graduate School of Public Health, SDSU
- Ira Goodman, M.S.  
Associate Director for Administration, UCSD Moore's CC
- Melbourne Hovell, Ph.D., M.P.H.  
University Distinguished Professor of Public Health, Graduate School of Public Health, SDSU
- Vanessa Malcarne, Ph.D.  
Professor of Psychology, SDSU
- Estralita Martin, Ph.D.  
Assistant Dean for Student Affairs, College of Sciences and Director for the Center for the Advancement of Students in Academia (CASA), SDSU
- John Pierce, Ph.D.  
Professor of Family and Preventive Medicine, UCSD and Associate Director for Cancer Prevention and Control, UCSD Moore's CC
- Georgia Robins Sadler, BSN, MBA, Ph.D.  
Clinical Professor of Surgery, UCSD and Associate Director for Community Outreach, UCSD Moore's CC
- Susan Matsuko Shinagawa  
Cancer Survivor, Community Advocate, Intercultural Cancer Council, Asian and Pacific Islander National Cancer Survivors Network

- Catherine Todero, RN, Ph.D.  
Director and Professor of Nursing, School of Nursing, SDSU

### **Community Liaison Subcommittee (CLS)**

The **Community Liaison Subcommittee (CLS)** is the community “think-tank” of the Comprehensive Partnership and comprised of individuals with extensive community linkages, an extraordinary track record of community service, and a commitment to the elimination of cancer disparities. The CLS serves to guide the research, training, education, and outreach activities of the Comprehensive Partnership.

- Lynda Barbour, M.P.H.  
Regional Health Promotion Director, American Cancer Society
- Syvera Hardy, RN  
San Diego Black Nurses Association
- Tana Lepule  
Union of Pan Asian Communities
- Lolita Lizarraga  
Cancer Survivor and Community Advocate
- Susan Matsuko Shinagawa  
Cancer Survivor, Community Advocate, Intercultural Cancer Council, Asian & Pacific Islander National Cancer Survivors Network

### **Cancer Center Liaison Subcommittee (CCLS)**

The **Cancer Center Liaison Subcommittee (CCLS)** is the **CC administration’s representative board** of the Comprehensive Partnership and comprised of the four CC Associate Directors. The CCLS ensures bi-directional integration of priorities, agenda, and activities between the CC and the Comprehensive Partnership.

- Ira Goodman, M.S.  
Associate Director for Administration
- John Pierce, Ph.D.  
Associate Director for Cancer Prevention and Control
- Georgia Robins Sadler, BSN, MBA, Ph.D.  
Associate Director for Community Outreach
- Jean Wang, Ph.D.  
Associate Director for Basic Research